

The **Sukhoi Su-30 MKI** (NATO reporting name **Flanker-H**) is a variant of the Sukhoi Su-30 jointly-developed by Russia's Sukhoi Corporation and India's Hindustan Aeronautics Limited (HAL) for the Indian Air Force (IAF). It is an air superiority fighter which can also act as a multirole, strike fighter jet.

The development of the variant started after India signed a deal with Russia in 2000 to manufacture 140 Su-30 fighter jets. The first Russian-made Su-30MKI variant was integrated into the IAF in 2002, while the first indigenous Su-30MKI entered service with the IAF in 2004.

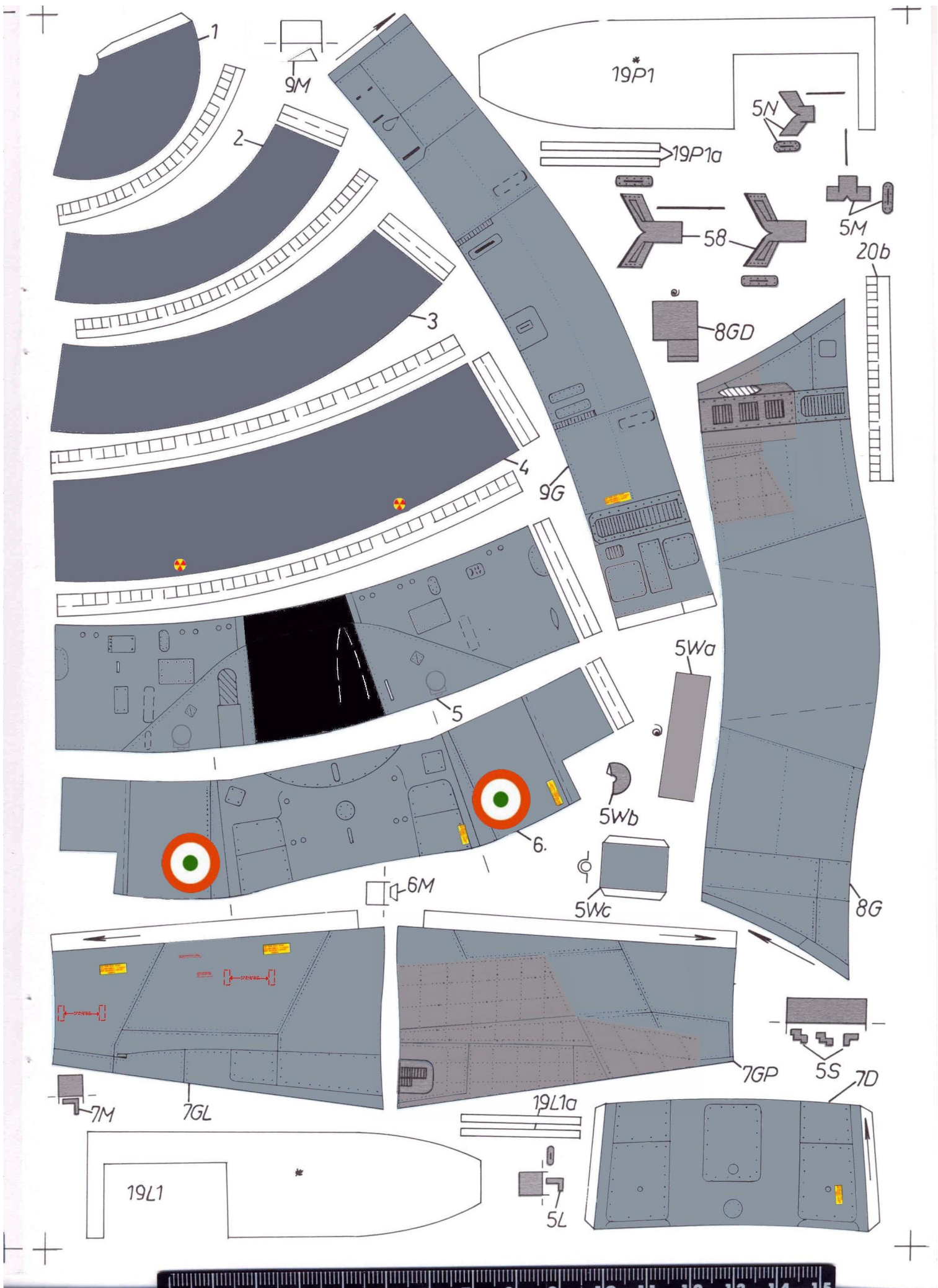
Capable of carrying nuclear weapons and tailor-made for Indian specifications, the fighter jet integrates Indian systems and avionics. It also contains French and Israeli subsystems. The MKI variant features several improvements over the basic K and MK variants and is classified as a 4.5 generation fighter. Due to similar features and components, the MKI variant is often considered to be a customized Indian variant of the Sukhoi Su-35

The Su-30MKI version is a development of the Su-27 series. Though a variant of Su-30, the Su-30 MKI is more advanced than the basic Su-30 or the Chinese Su-30 MKK aircraft. Its avionics, aerodynamic features and components are similar to the Su-35. This variant has significant upgrades on it from the basic Su-30MK version.

The aircraft featured many modifications over the Su-27 and the Su-30MK variant. These included canard fore-planes, 2-dimensional thrust vectoring control (TVC), Russian-made N011-M passive phased array radar (PESA) and a range of avionics complex sourced from Russia, France, Israel and India which includes display, navigation, targeting and electronic warfare systems.

## General characteristics

- **Crew:** 2
- **Length:** 21.935 m (72.97 ft)
- **Wingspan:** 14.7 m (48.2 ft)
- **Height:** 6.36 m (20.85 ft)
- **Wing area:** 62.0 m<sup>2</sup> (667 ft<sup>2</sup>)
- **Max takeoff weight:** 38,800 kg (85,600 lb)
- **Maximum speed:** Mach 2.35
- **powerplant:** 2× Lyulka AL-31FP

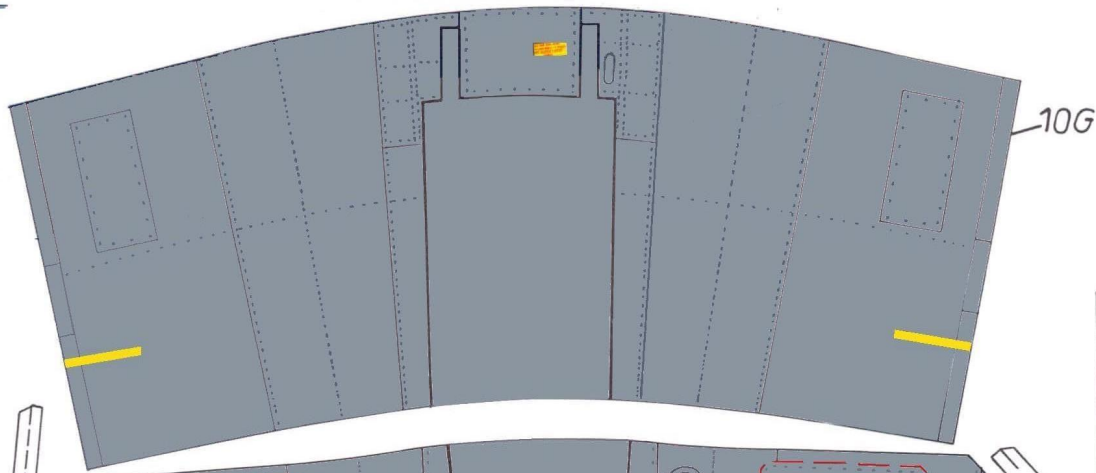




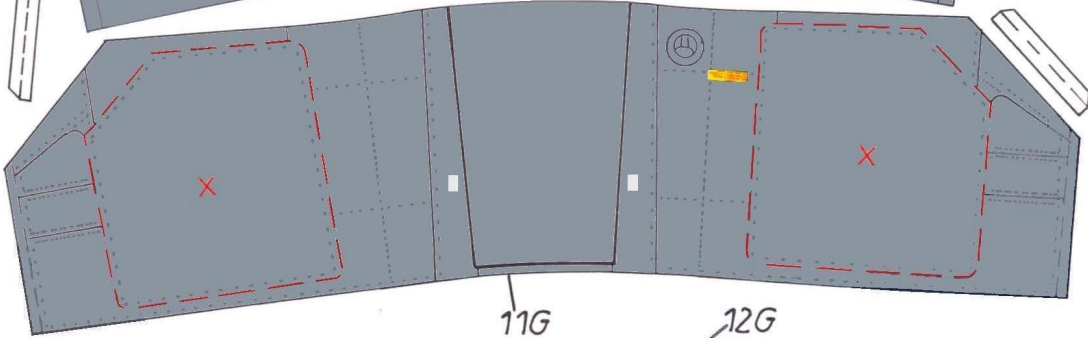
1/6



+

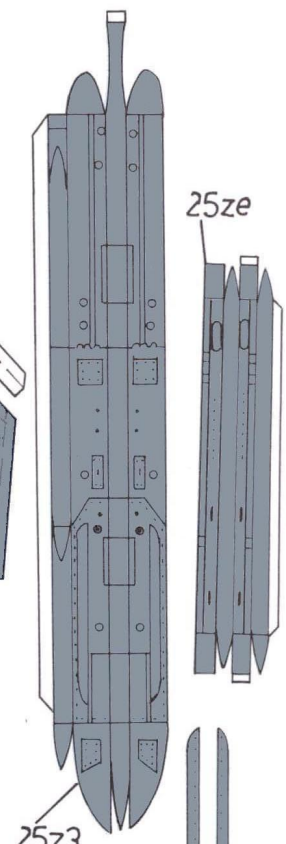
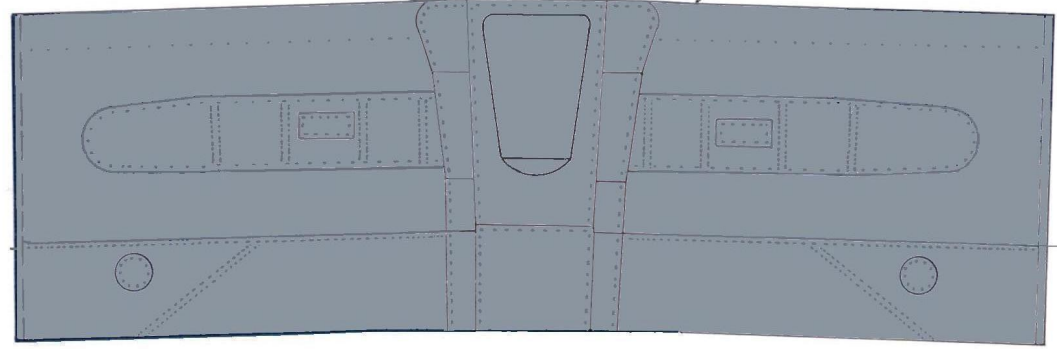


10G

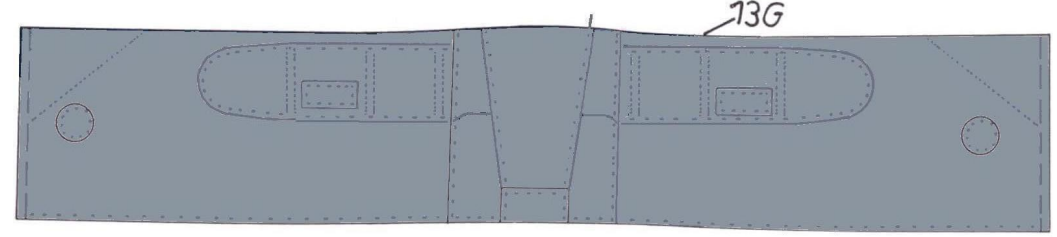


11G

12G



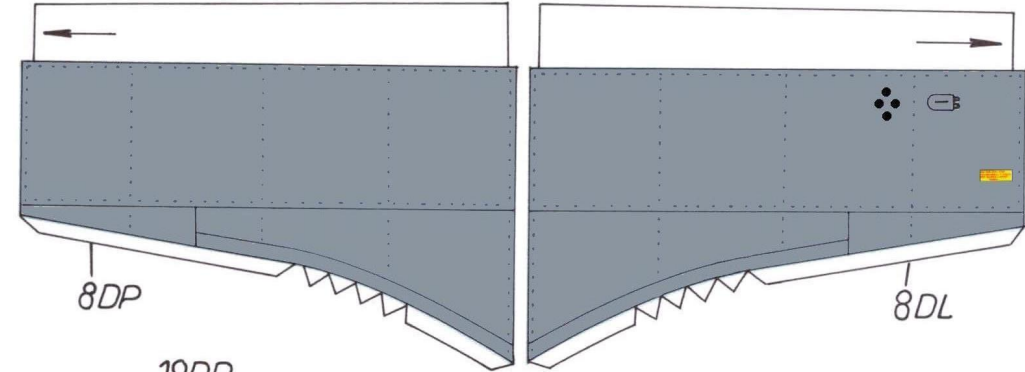
25ze



13G

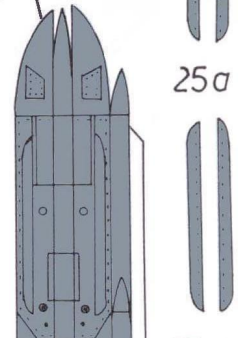
25z3

25a

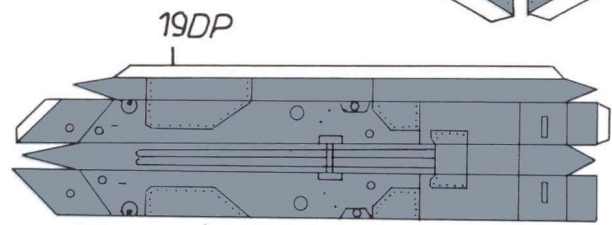


8DP

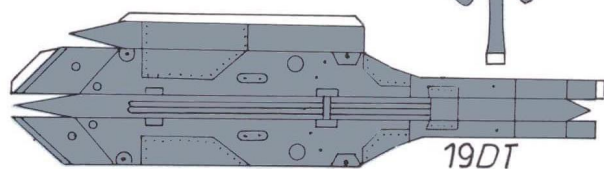
8DL



25ze



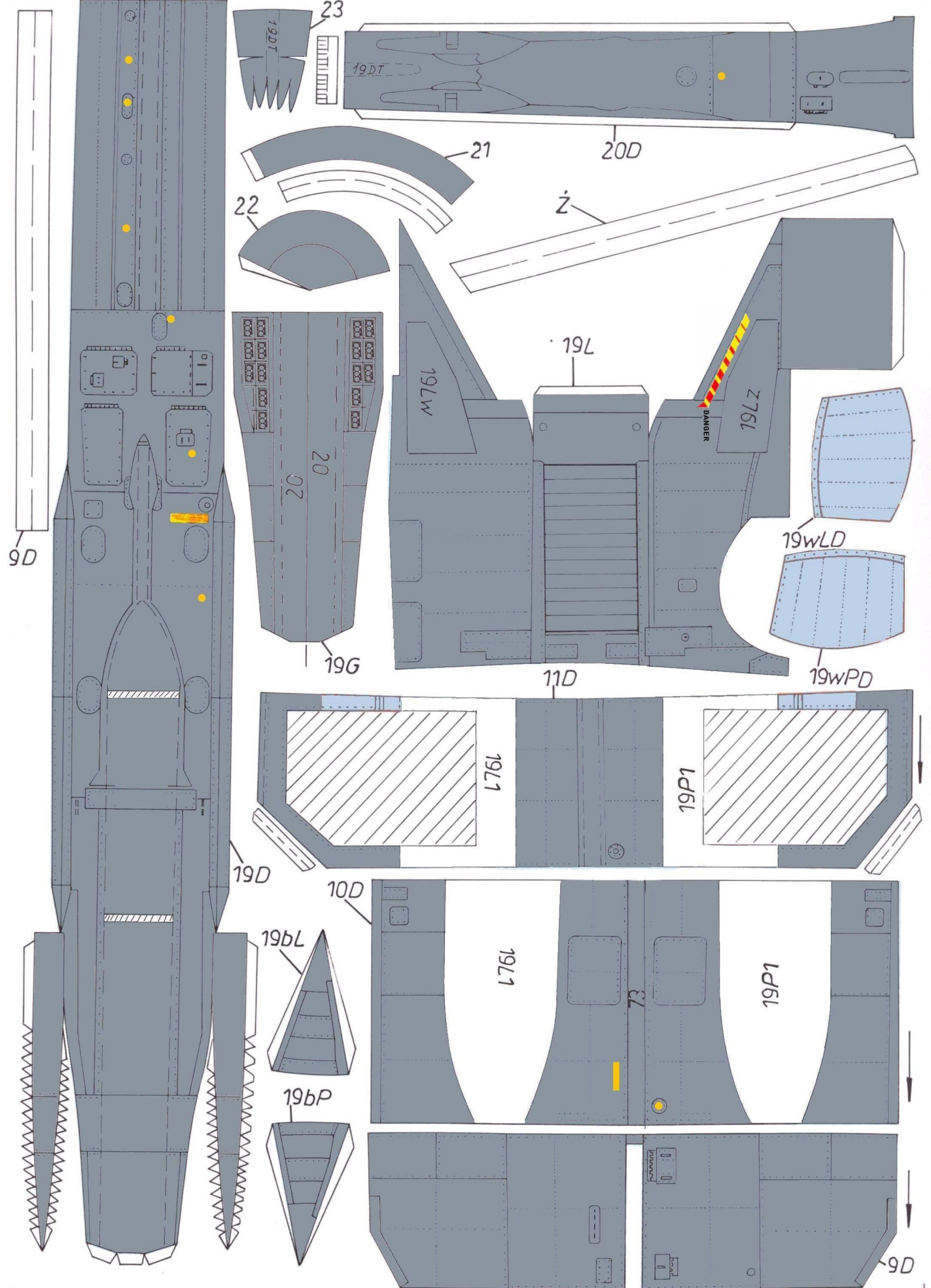
19DP



19DT

+

+



9D

19DT  
23

19DT

20D

22

21

Z

19L

19LW

DANGER

19LSL

19wLD

20

19G

19wPD

11D

19L1

19P1

19D

10D

19bL

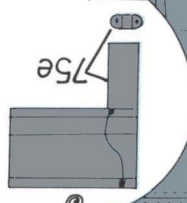
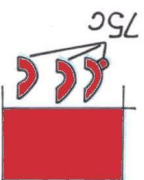
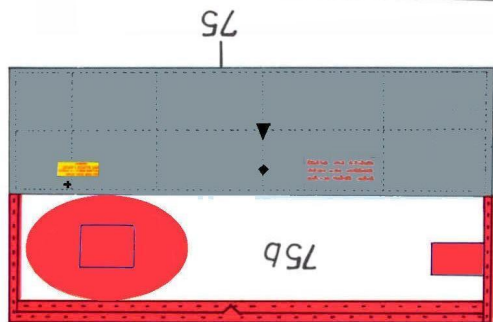
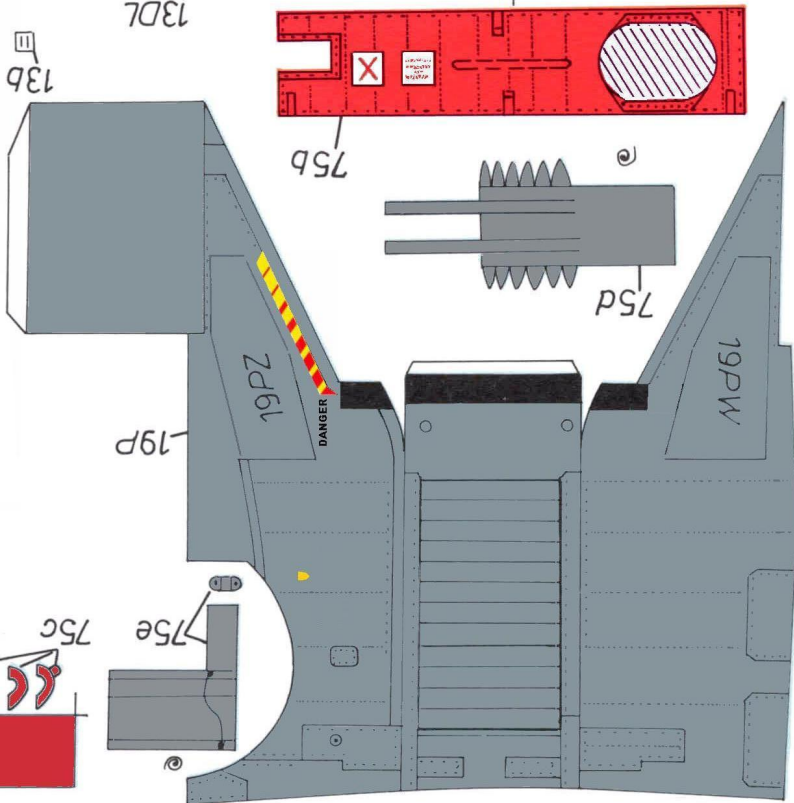
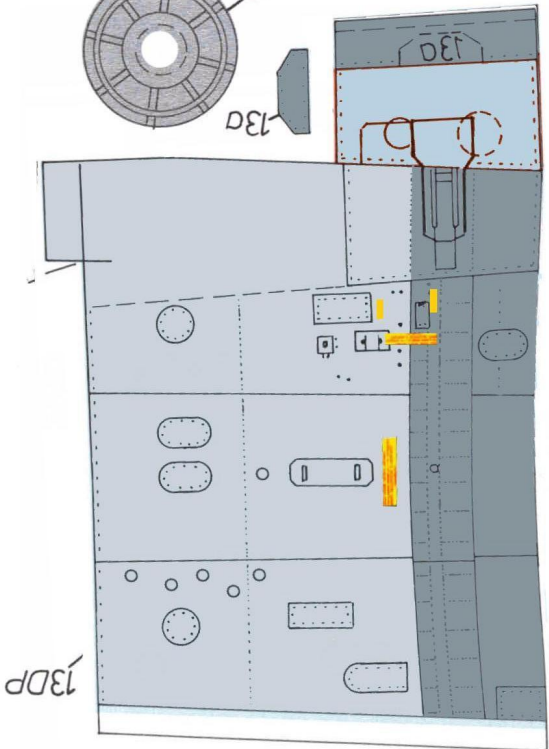
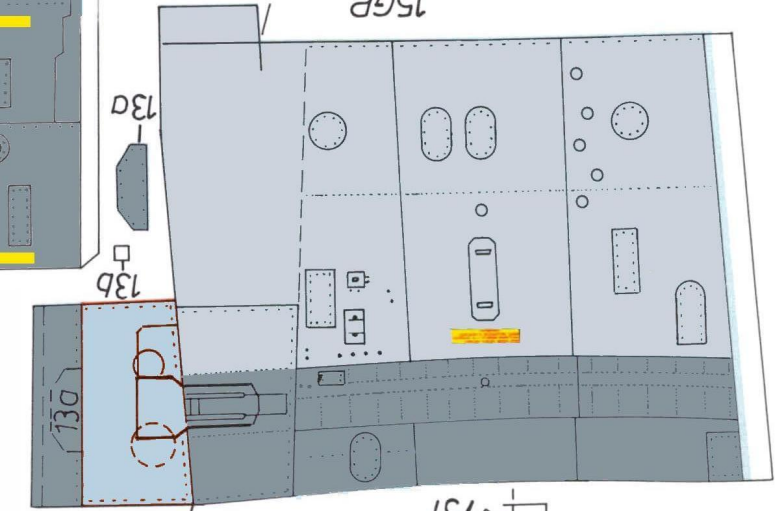
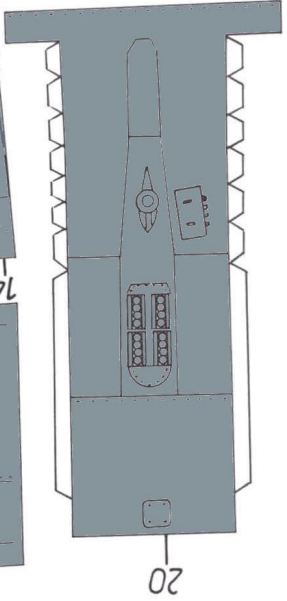
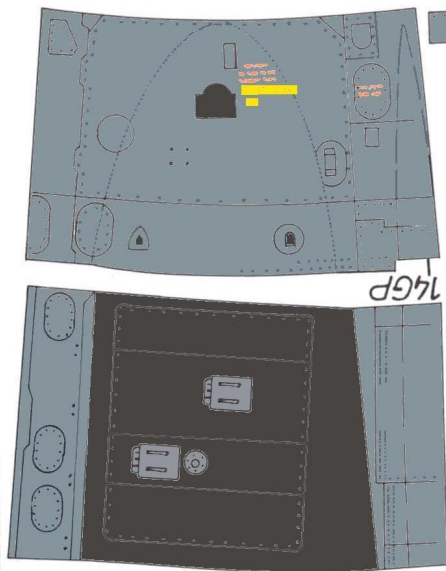
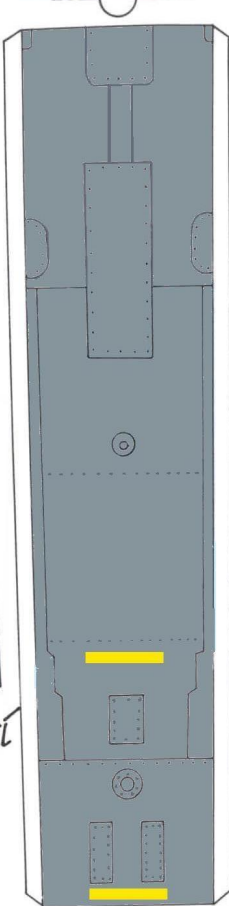
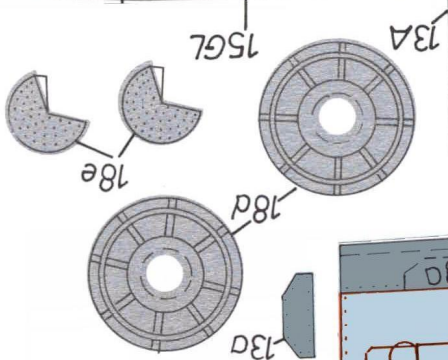
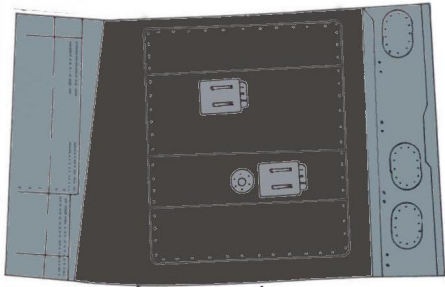
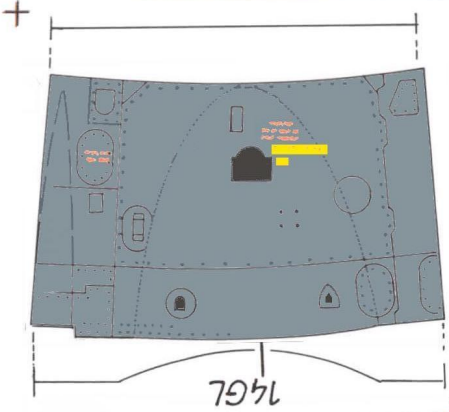
19L1

19P1

19bP

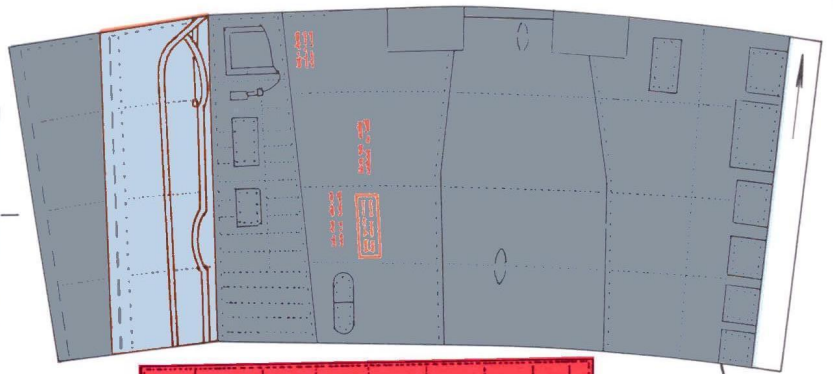
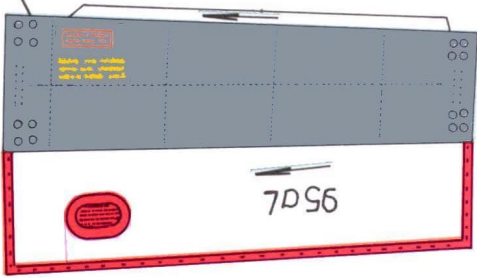
9D



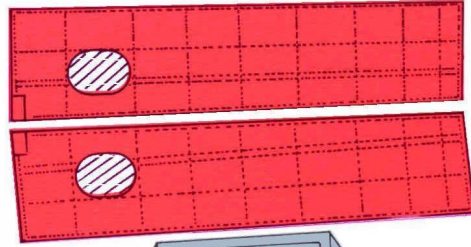
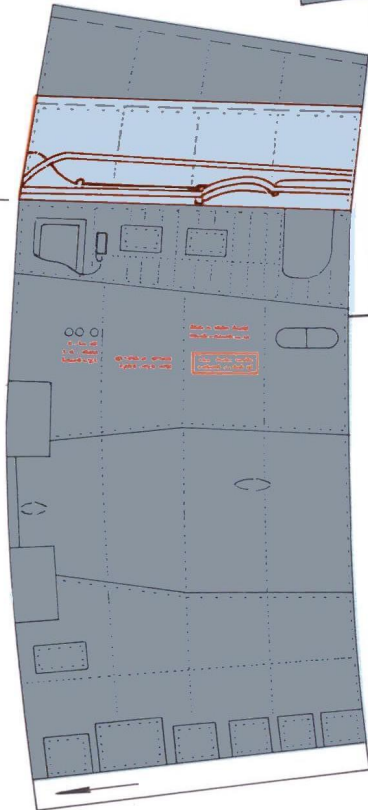
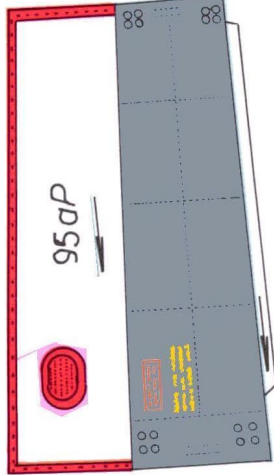




95L



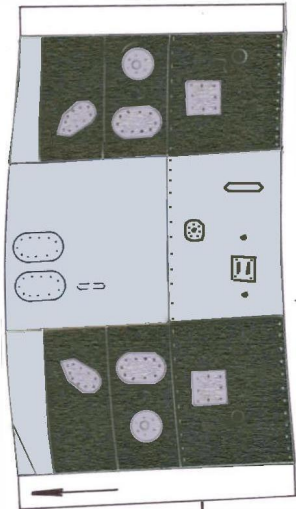
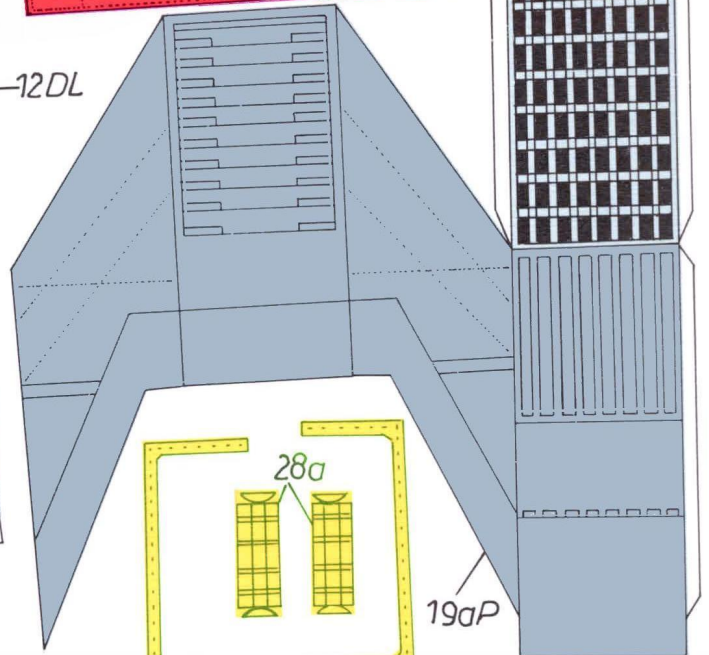
95P



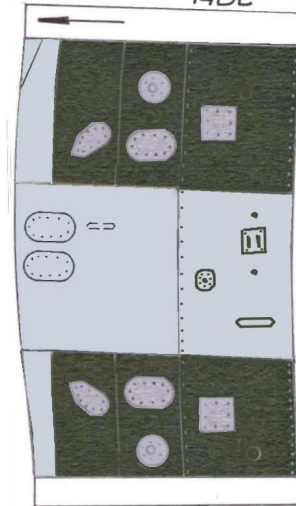
-95dL 12DP

-95aP

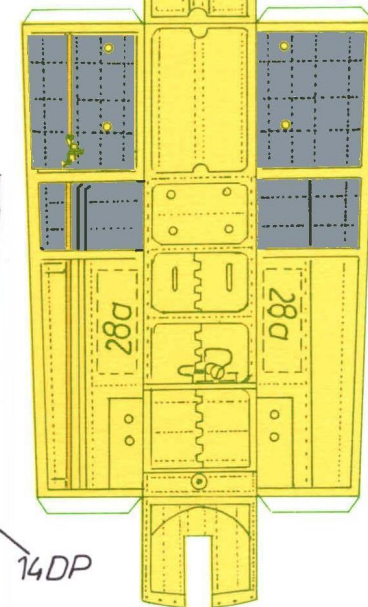
12DL



14DL



14m



28

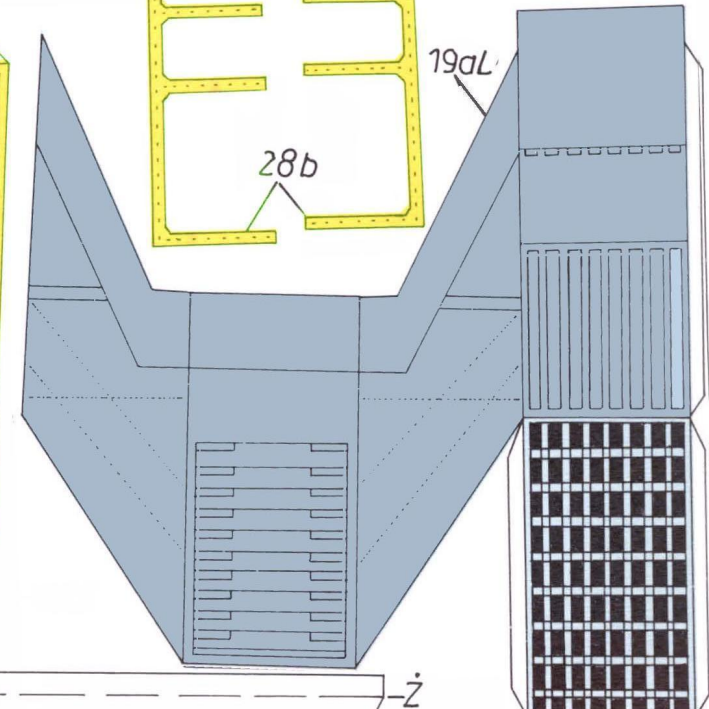
28a

28b

14DP

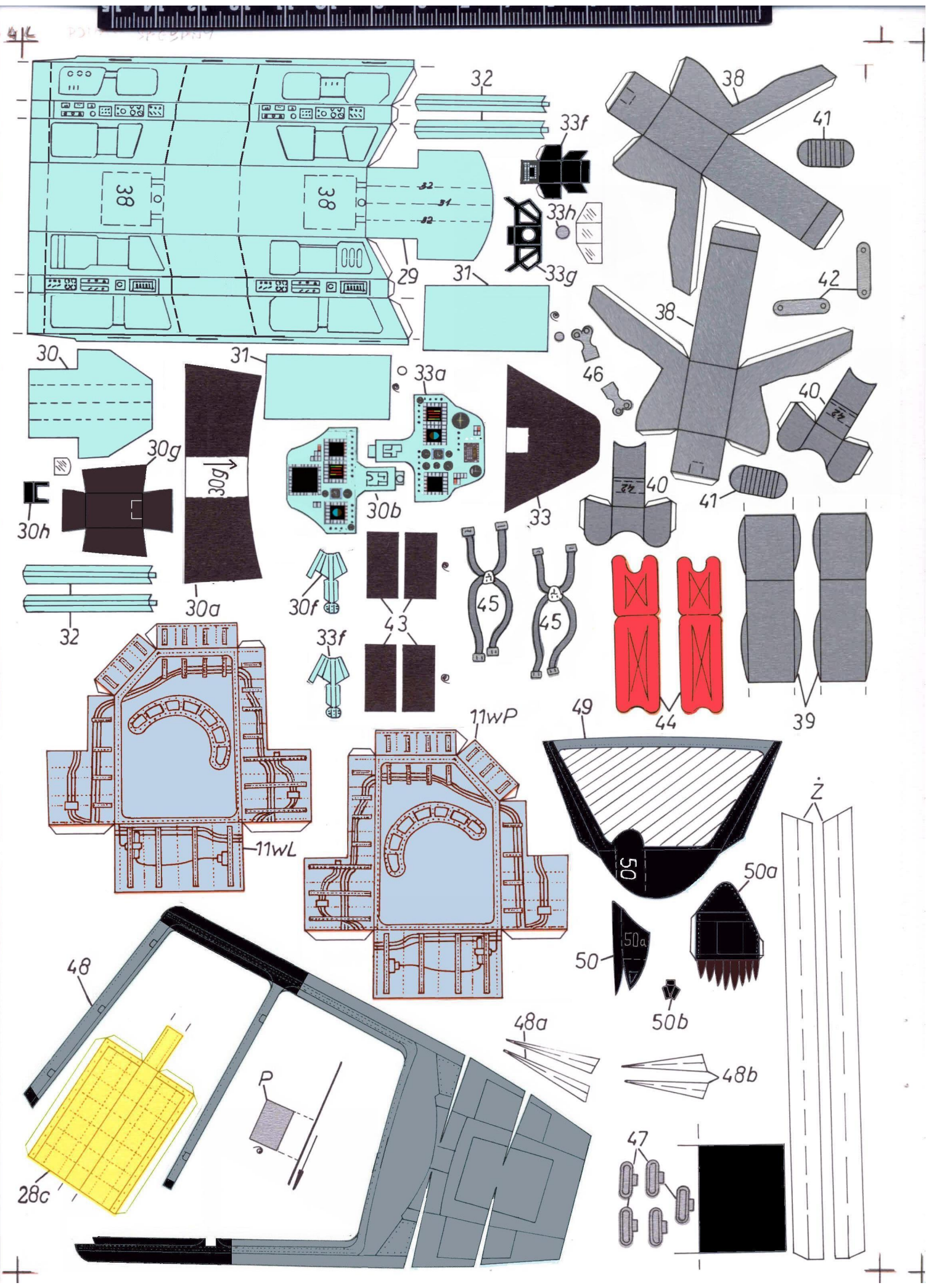
19aP

19aL



Z

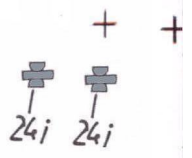




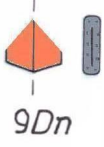




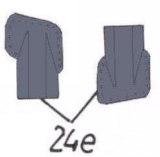
24aP



SB 115



9Dn



24e

26s



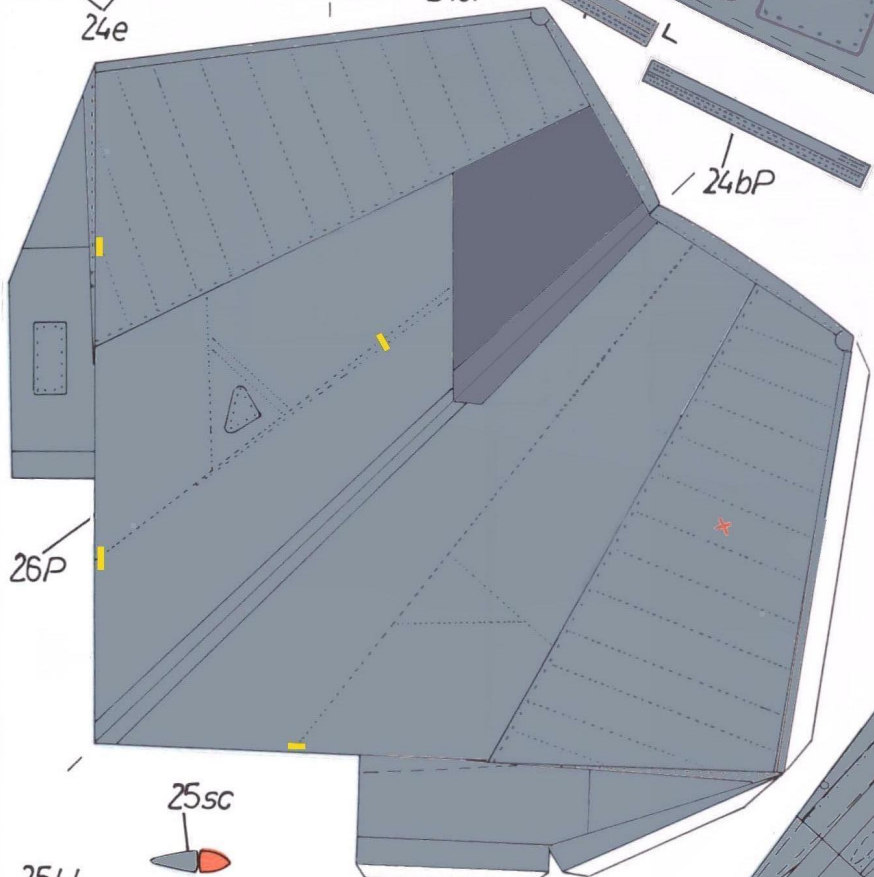
24cP

24bP

24P

24gP

26Pa

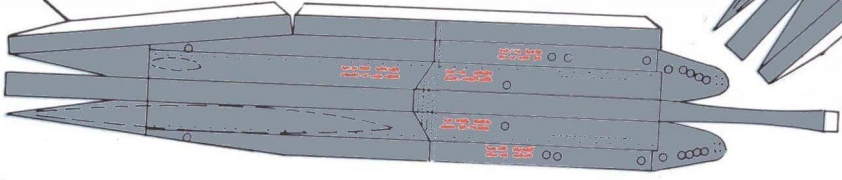


26P

25sc



25LL



25PP

15DL

11DP

15DP





24m

24gL

24bL

6D

24aL

16P

SB 115



16G

13bL

13bP

24cL

26La

26S

6GP

6GL

24L

24e

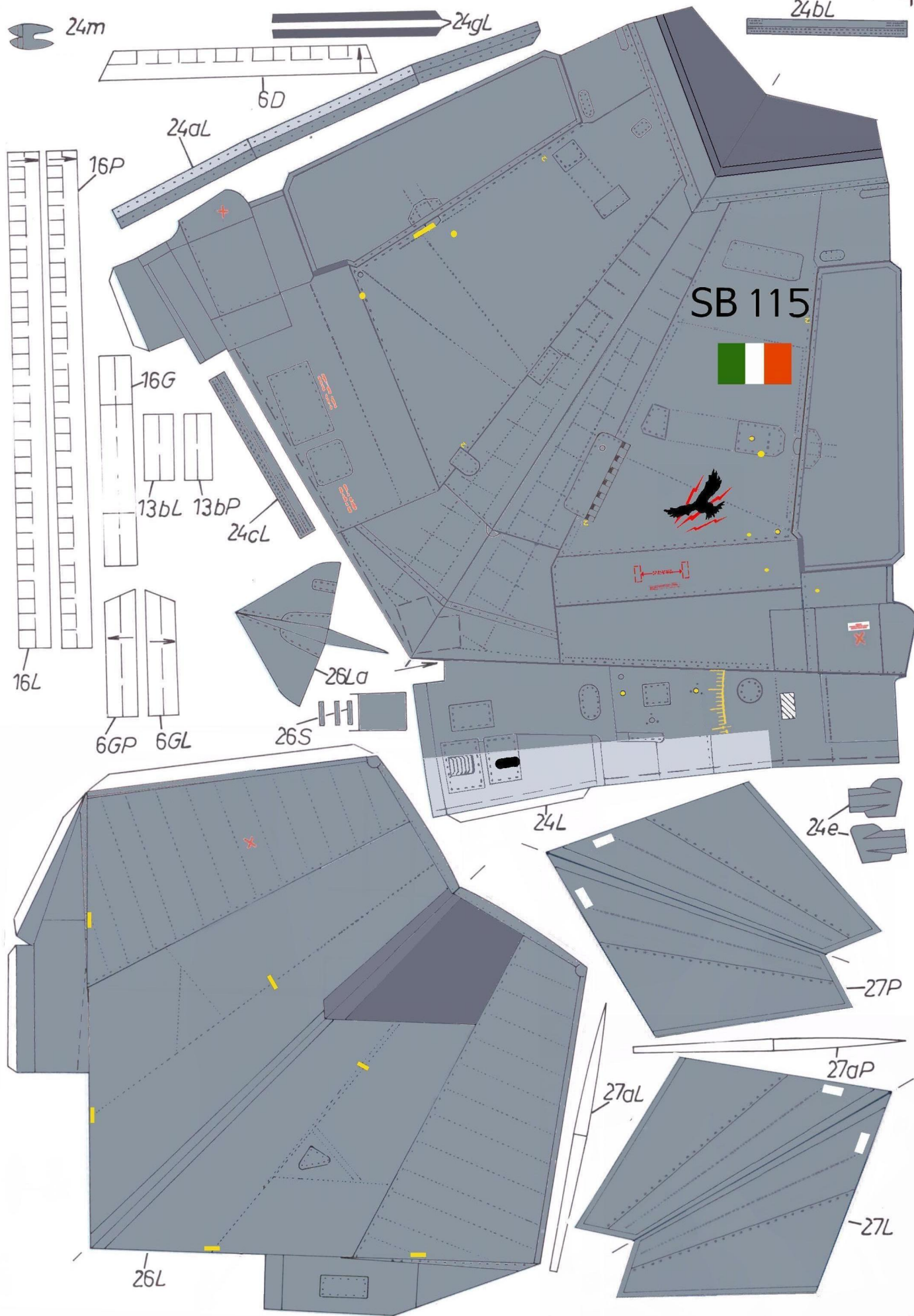
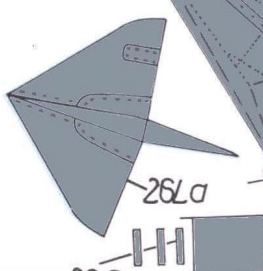
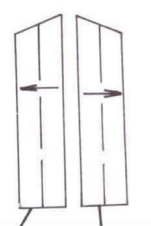
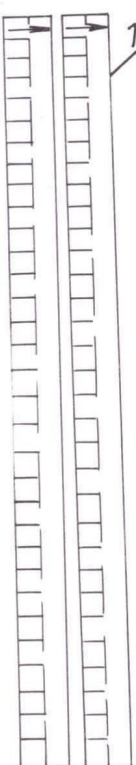
27P

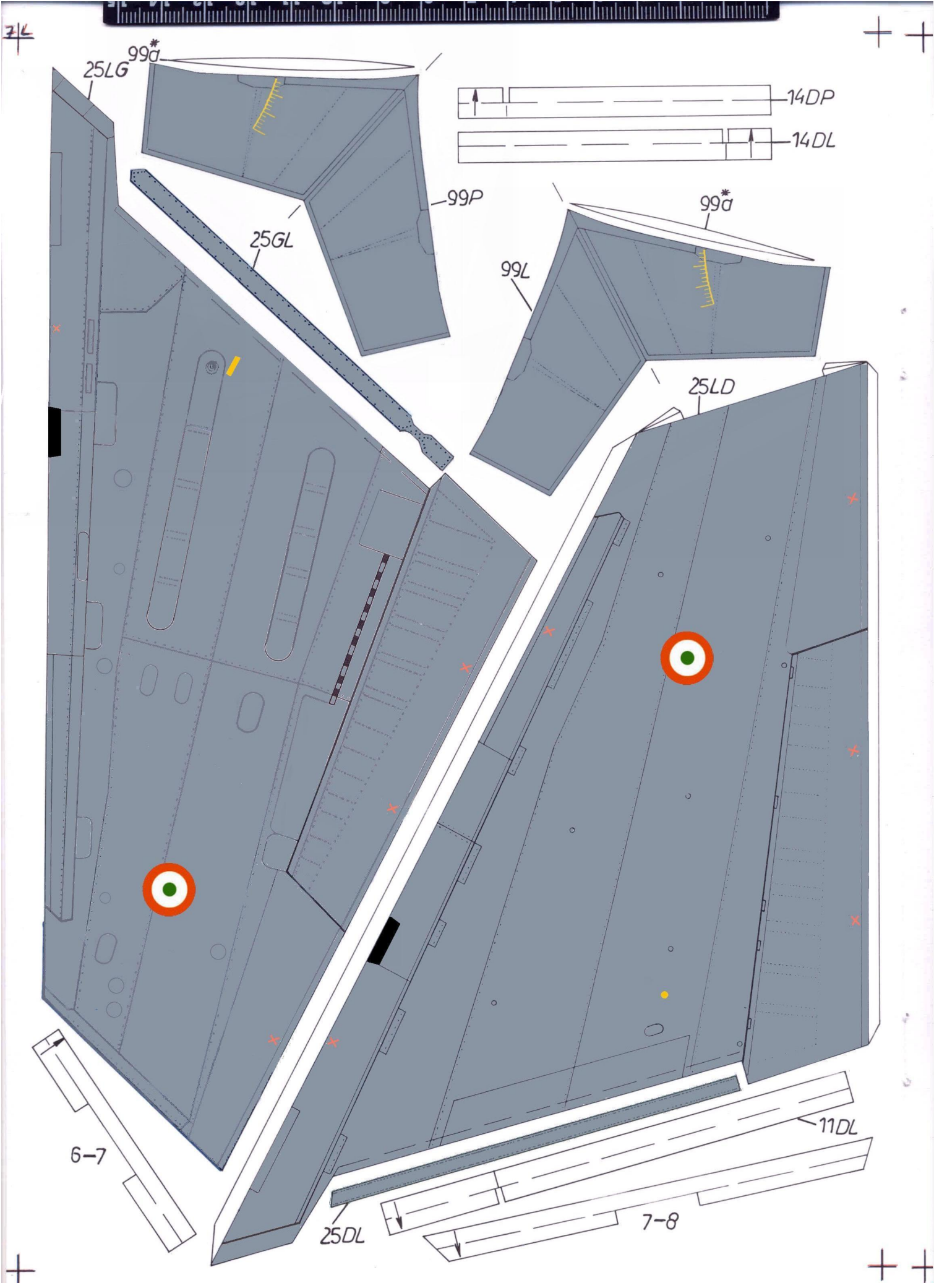
27aP

27aL

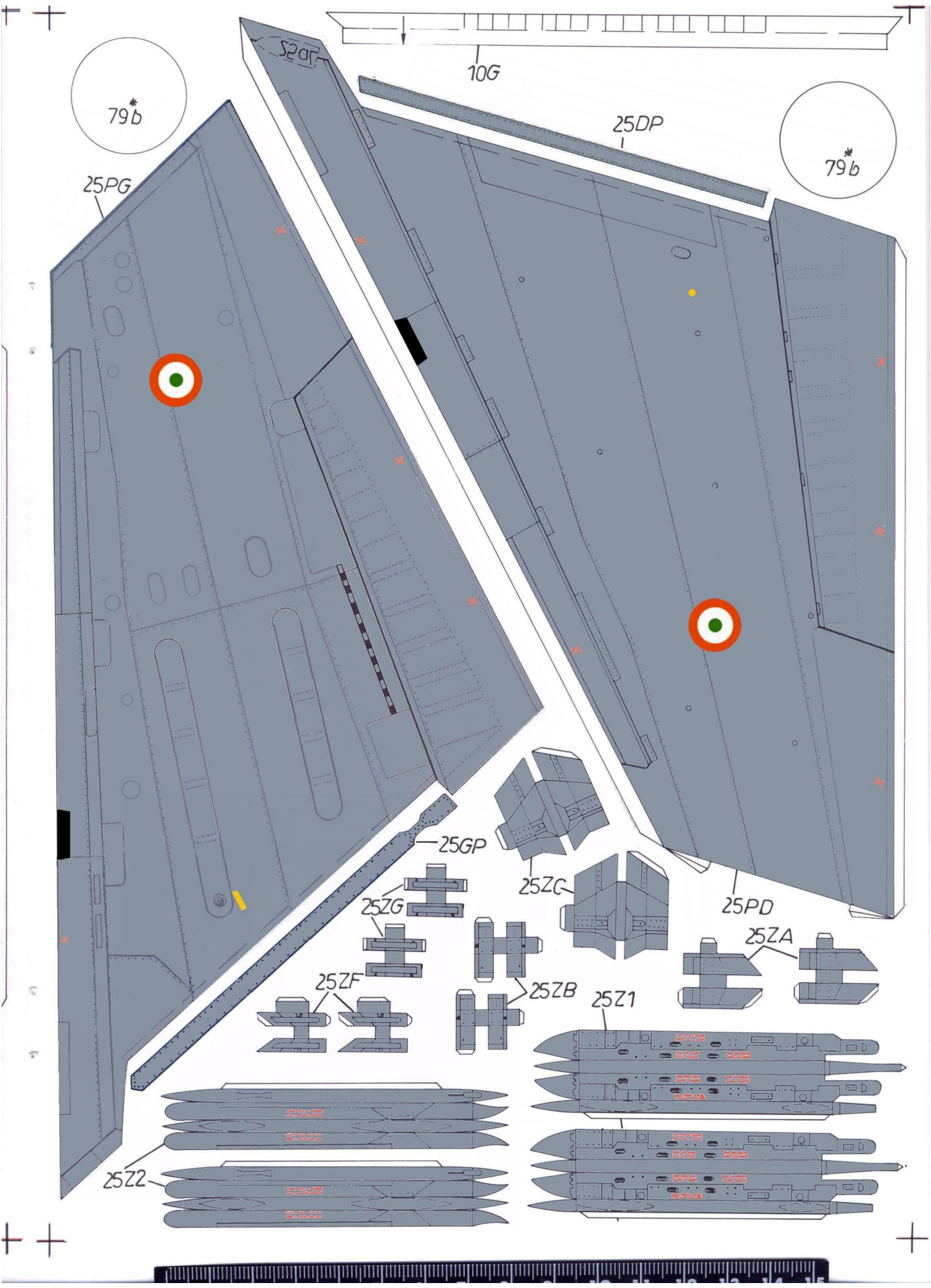
27L

26L









79\*

79\*

25PG

10G

25DP

S2a1

25GP

25ZG

25ZG

25PD

25ZF

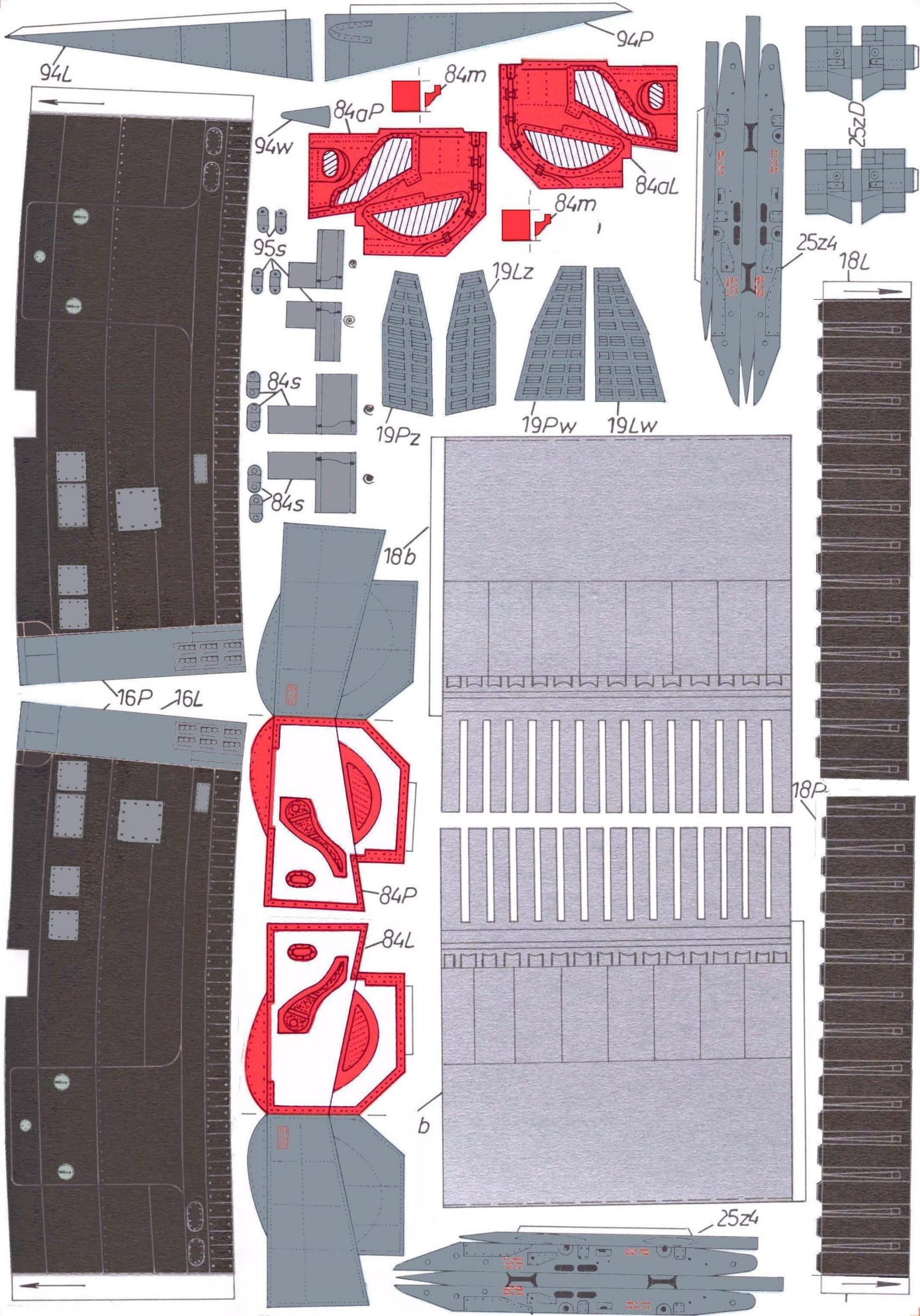
25ZB

25ZA

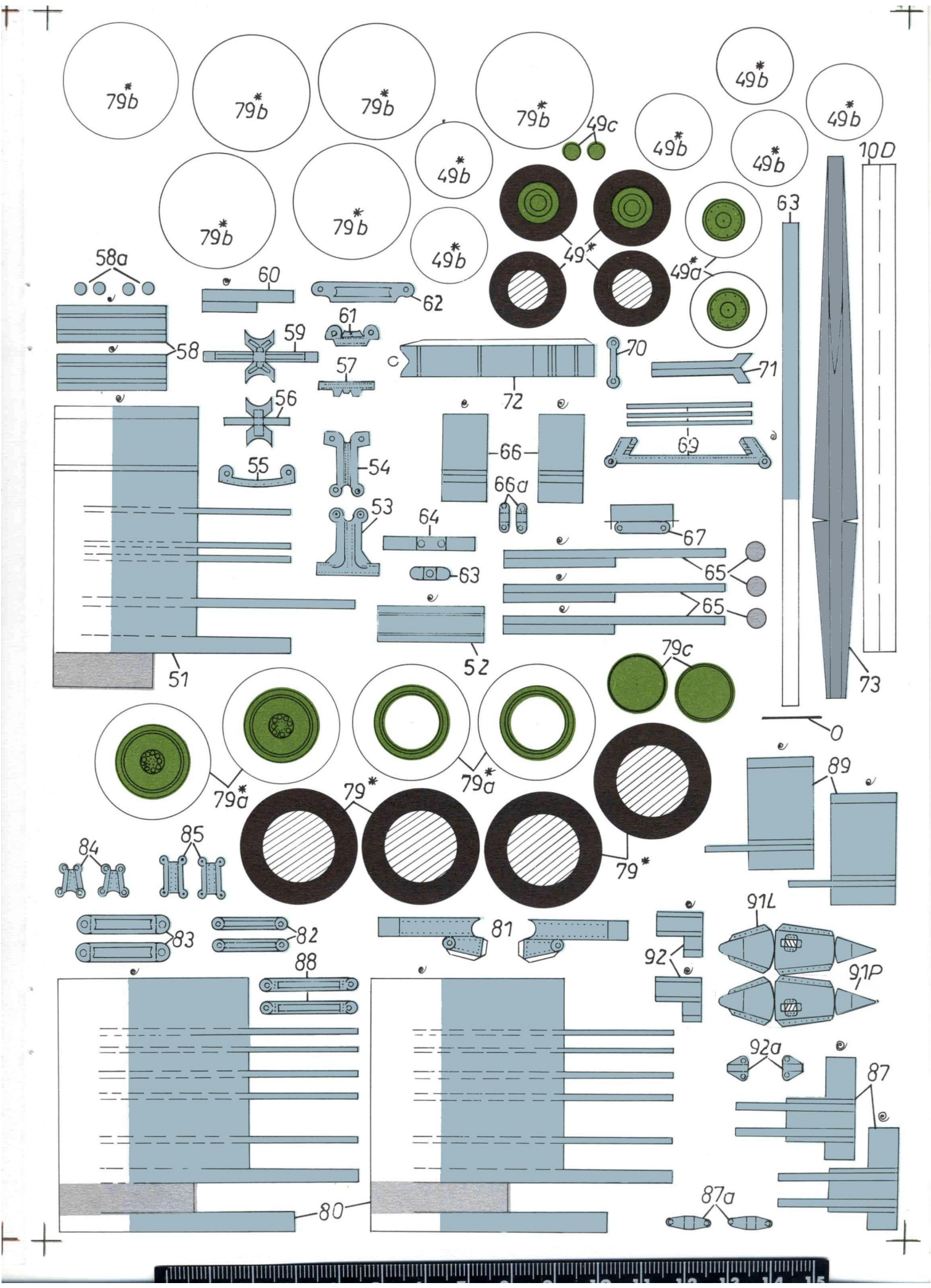
25Z1

25Z2

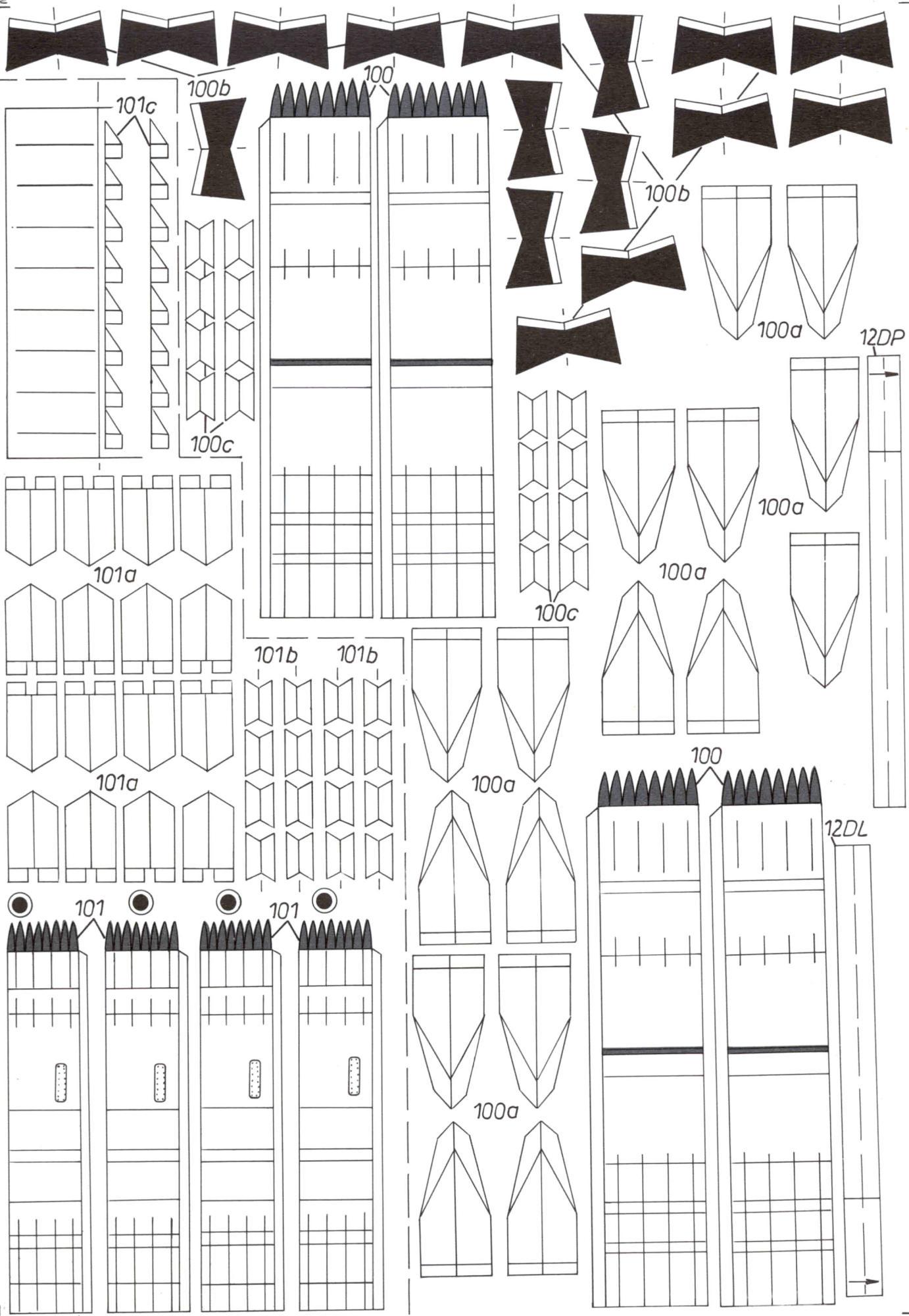






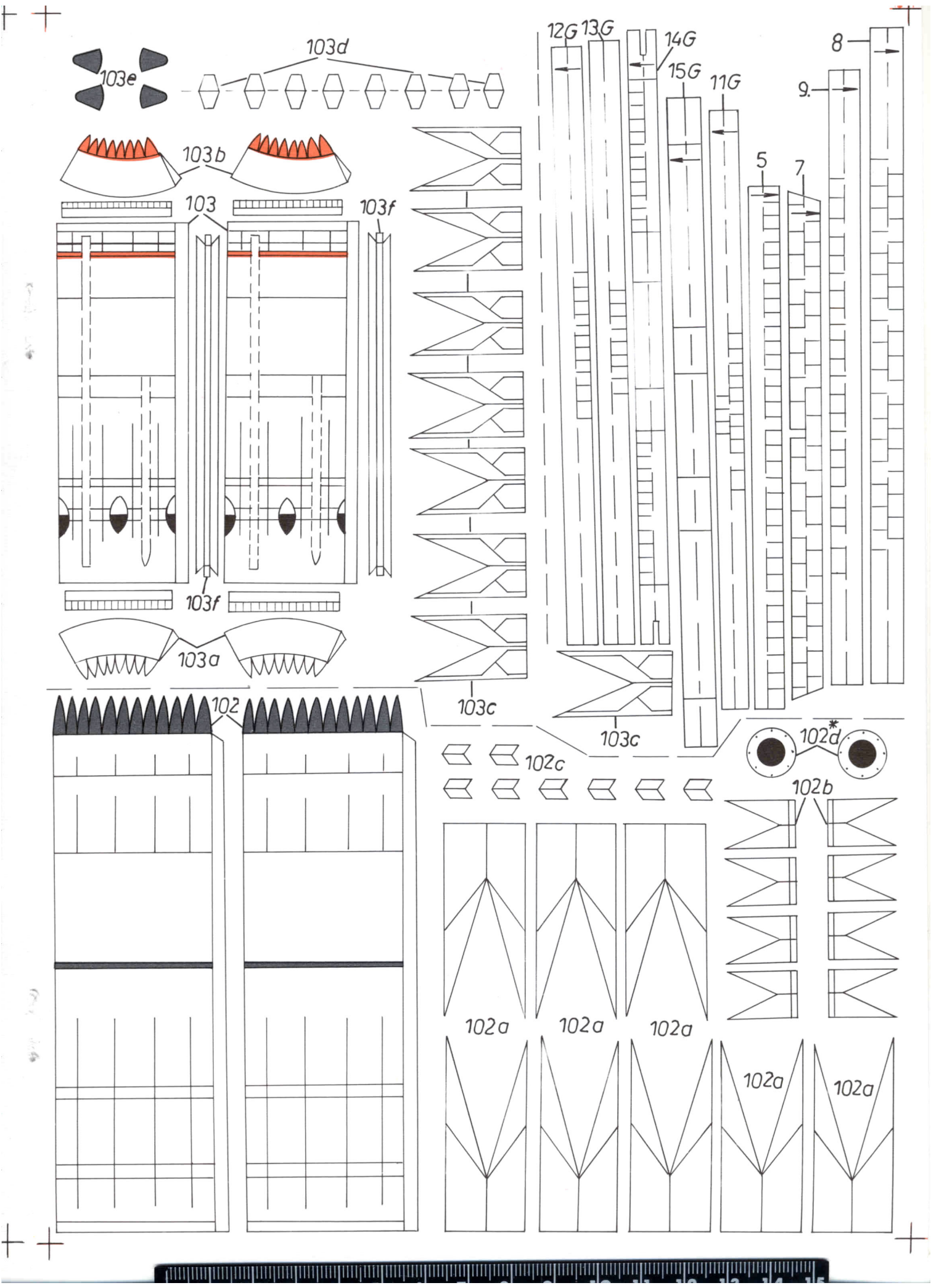


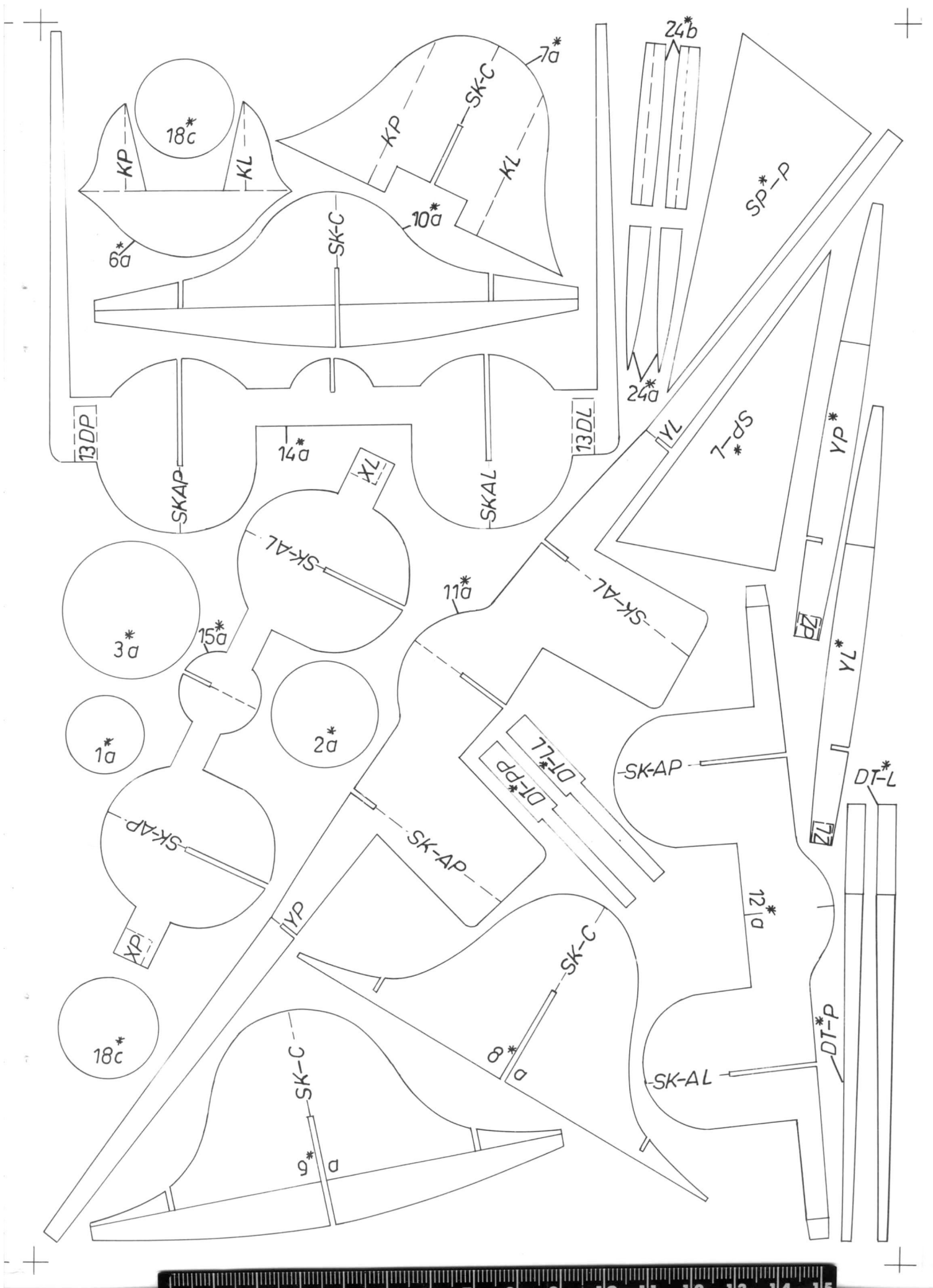
3/4



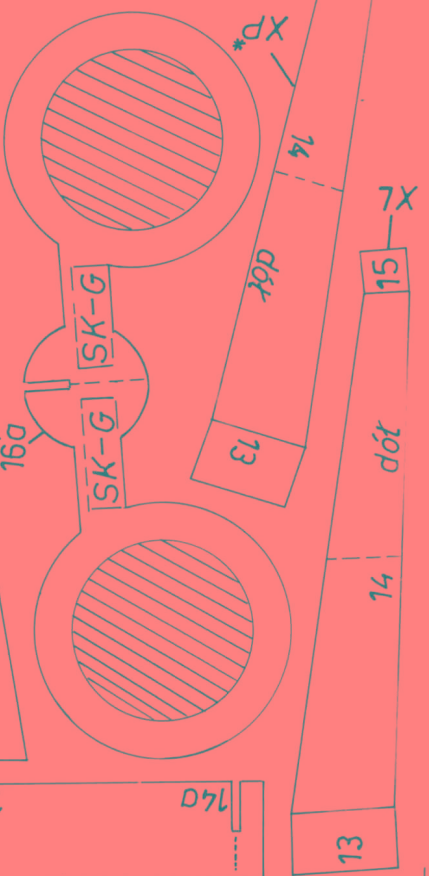
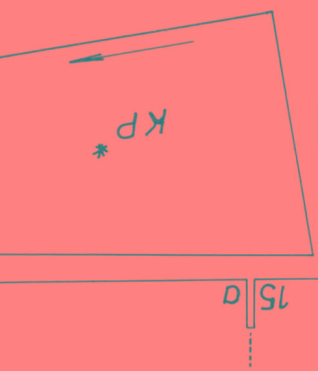
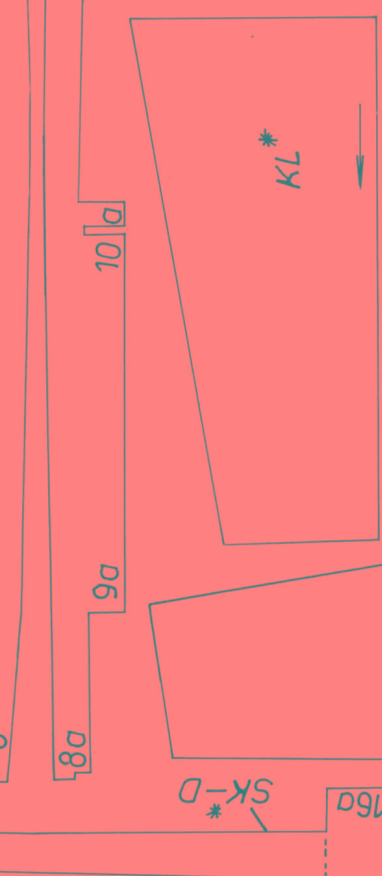
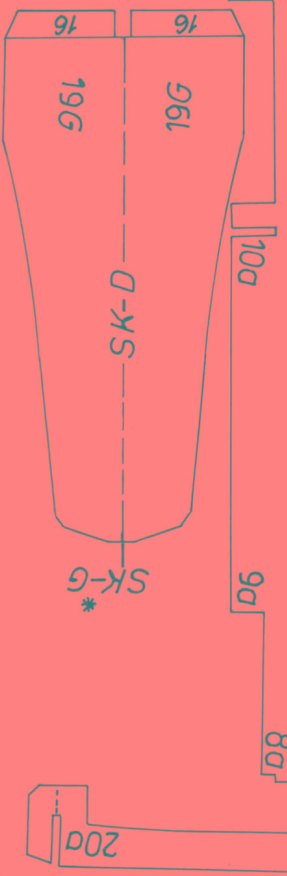
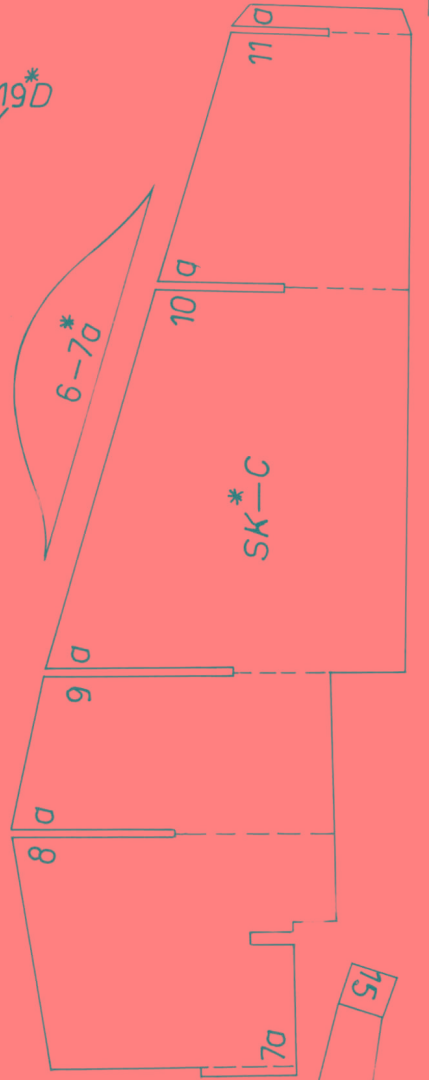
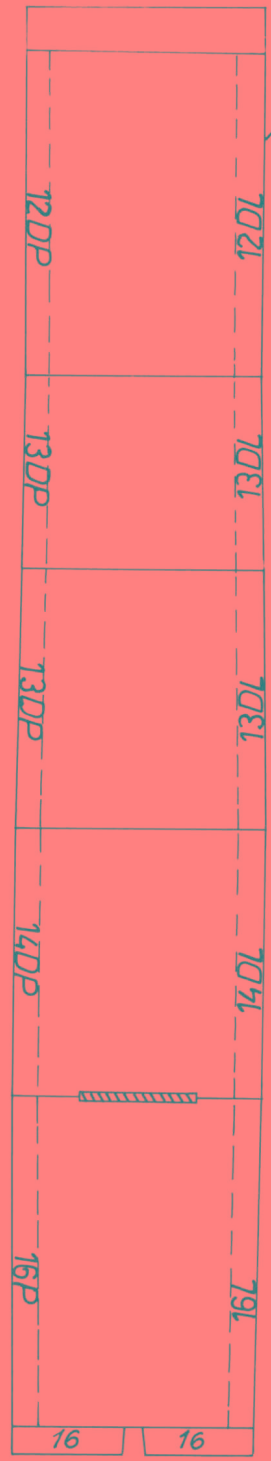
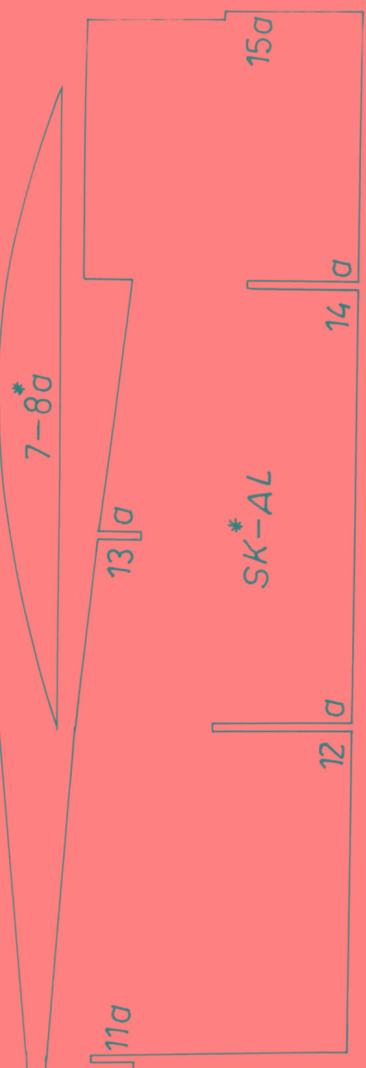
body part

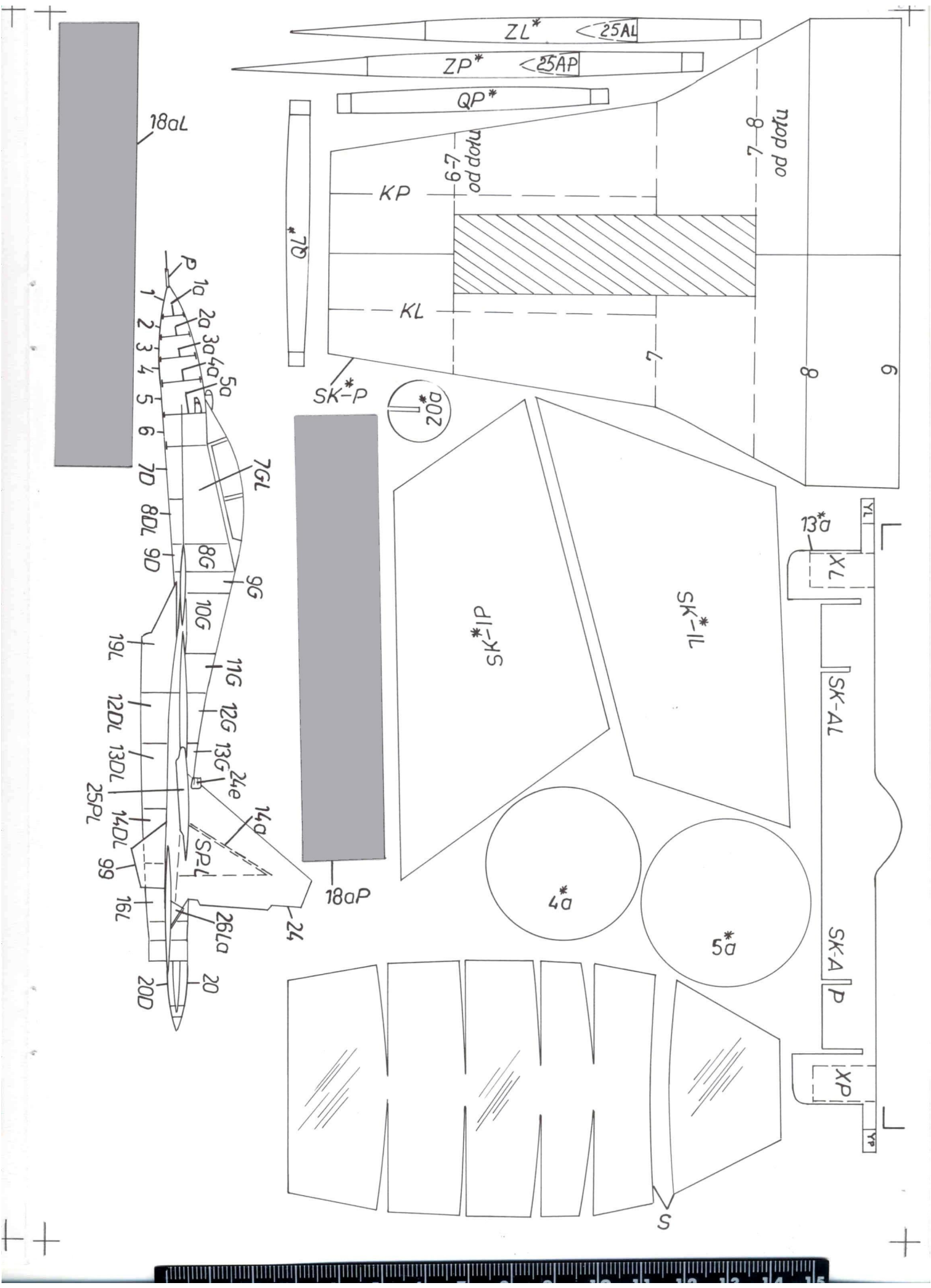






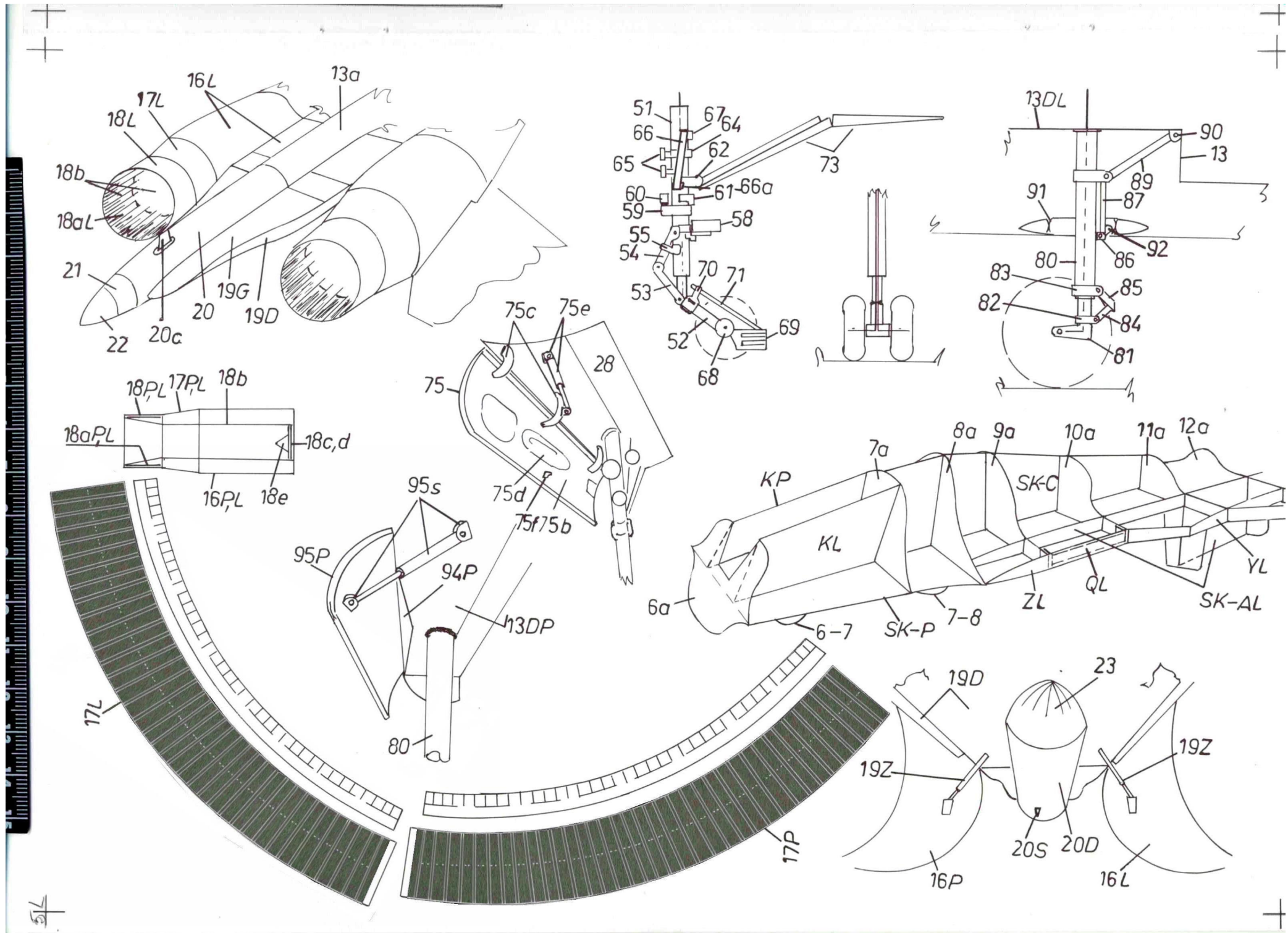




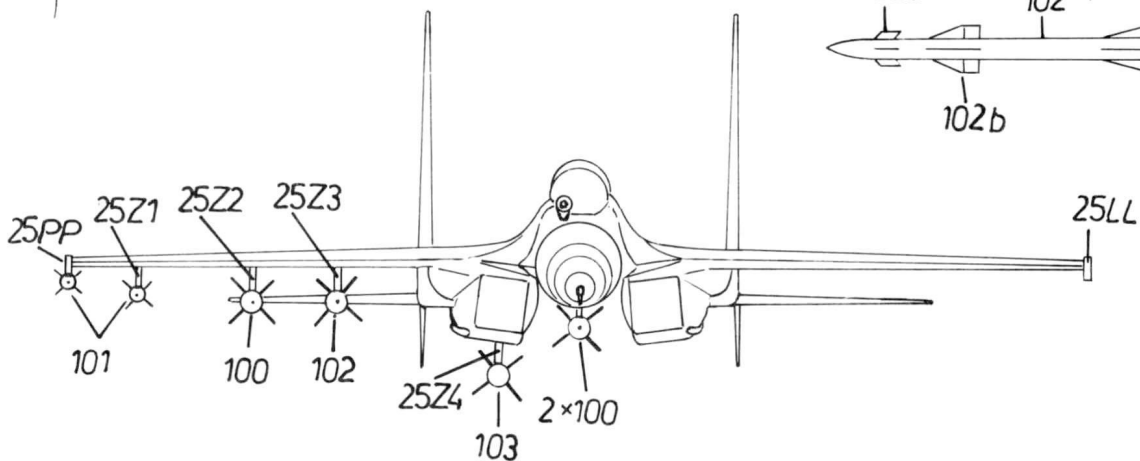
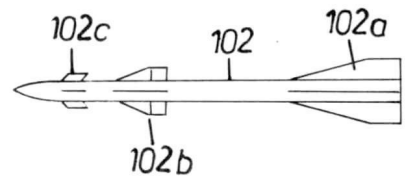
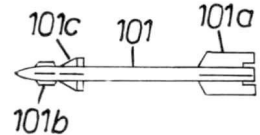
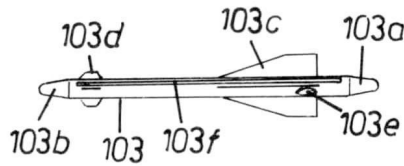
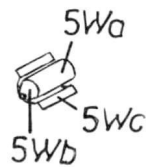
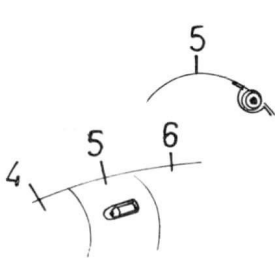
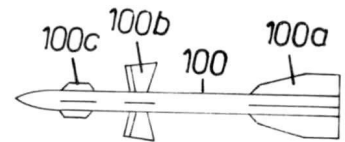
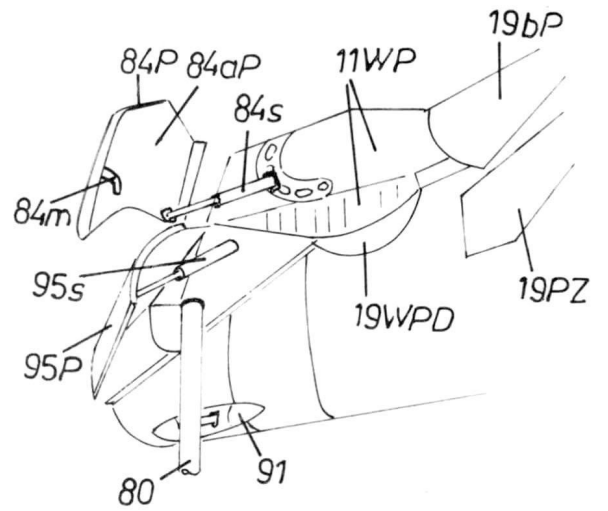
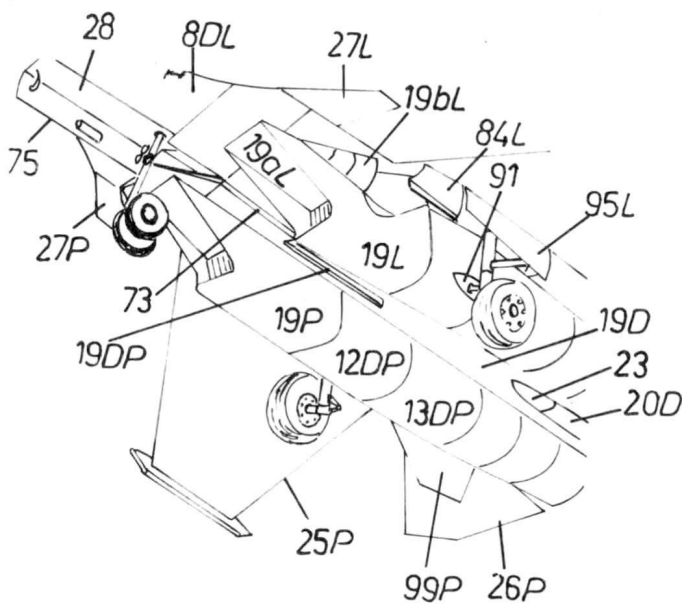
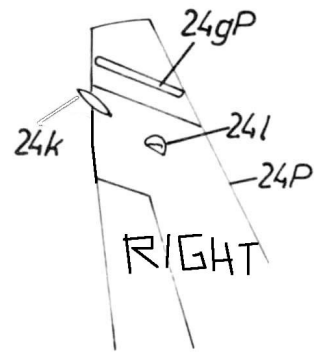
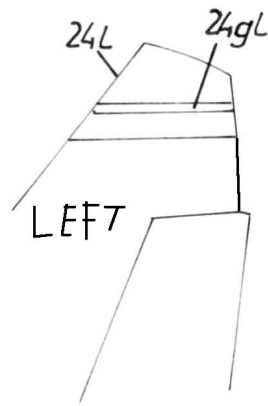
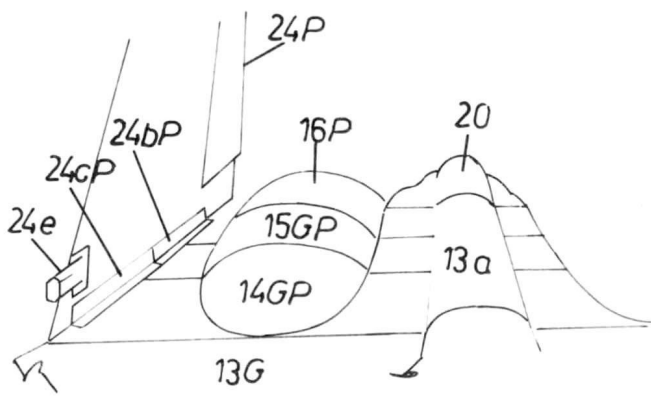


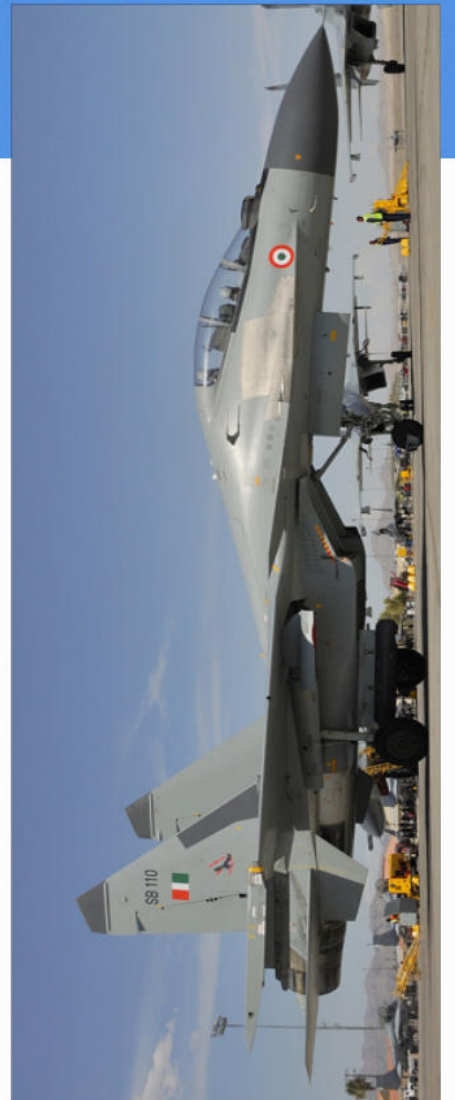










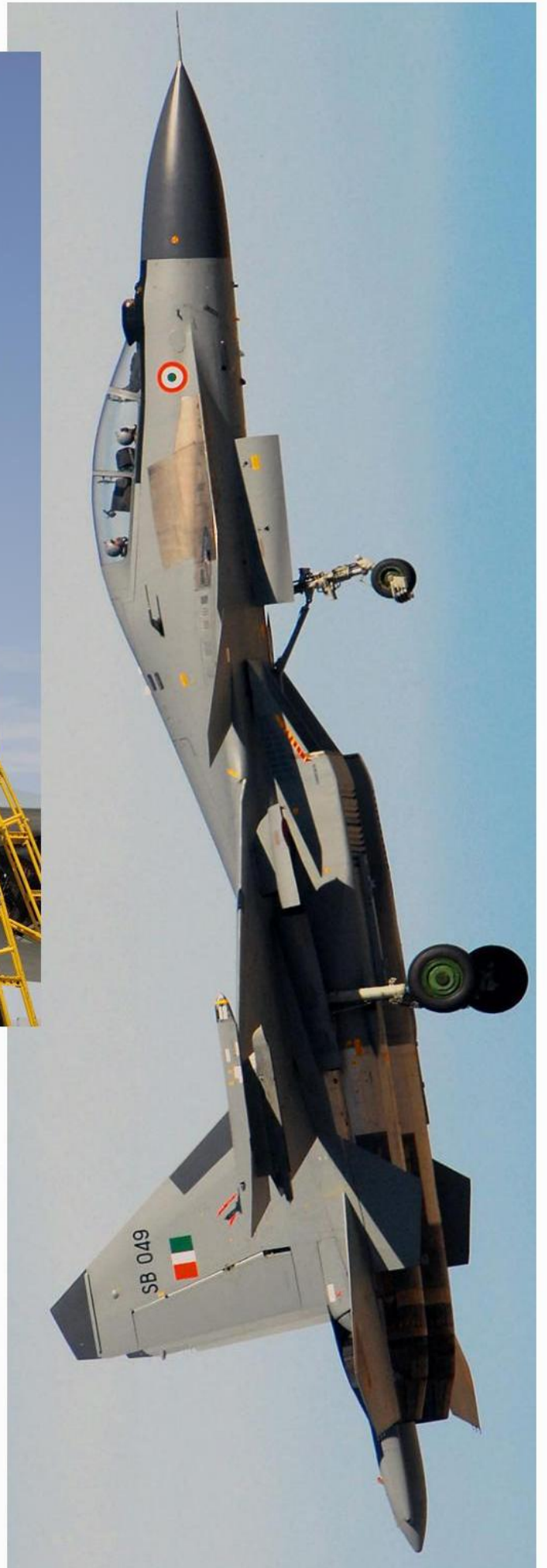




**REFERENCE :**



**REFERENCE :**





**REFERENCE :**



**REFERENCE :**





**REFERENCE :**



**REFERENCE :**





**REFERENCE :**



**REFERENCE :**





**REFERENCE :**





**REFERENCE :**



Photo © 2002  
Raghuram D.S.S.R



Photo © 2002  
Sushanth Kondi



Photo © 2002  
Sushanth Kondi



Photo © 2002 Sushanth Kondi



**REFERENCE :**



Photo © 2002  
Raghuram D.S.S.R



Photo © 2002 Sushanth Kondi



Photo © 2002  
Sushanth Kondi



Photo © 2002 Sushanth Kondi